



CODEZI

Committed For Engineering

CODEZI ENGINEERING SOLUTIONS (P) LTD

METAL WORKS



METAL WORKS

F A B R I C A T I O N S

**BRIDGING THE GAP
FROM CHALLENGES
TO SOLUTIONS.**

Let's discuss
your next project.

FREE ESTIMATE
CALL +91 99949 86120

OUR COMPANY

CODEZI ENGINEERING SOLUTIONS (P) LTD is a multidisciplinary engineering Company, is a one-point service center for all your Project needs. Our scope covers Design & Detail Engineering, Fabrication, Erection, Installation and Commissioning.

CODEZI ENGINEERING SOLUTIONS (P) LTD. works with the highest efficiency and in accordance with the latest technologies in conformity with international standards of quality, security and safety. We utilize trained and experienced staff for the implementation and delivery of projects with commitment to contract terms, conditions, and preservation to the environment. This company will cater the needs for the design, detailing, fabrication & erection of almost all imaginable steel structures.

We execute all projects in accordance with technical and financial strategies to fit the distinctive character of the construction projects and to achieve the maximum benefit for our customers.

WHY CODEZI ENGINEERING

- Commitment to cost and time schedule
- Embracing the pursuing change
- Developing sincere relationship
- Having passion for what we do
- Innovation and creativity in solving problems
- Providing uncompromised quality
- Quality and safety first
- Committed & motivated workforce

SAFETY

At CODEZI, safety comes first in everything we do. Our goal is to have an incident and injury free workplace.

All of CODEZI is committed to top quality workmanship, professional customer service, and guaranteed delivery, but never at the expense of safety. CODEZI strives to uphold the highest quality standards, through:



Guaranteed Quality

- Professional certification & quality assurance.
- Comprehensive project documentation.

Guaranteed Service

- Dedicated single point of contact throughout each project.
- Friendly, knowledgeable and professional staff.

Guaranteed Delivery

- Make no commitments we cannot keep.
- Will not accept a project that we cannot deliver on time

OUR FOCUS

Custom fabrication and modularization of mild steel, stainless steel and other value added services.

OUR GOAL

To maximize the business value of your project through Early Contractor Involvement (ECI) and optimize the fabrication process with modularization.

OUR MISSION

Adding value to everything we do by creating better solutions

OUR APPROACH

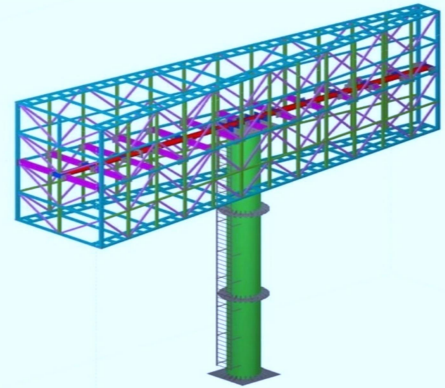
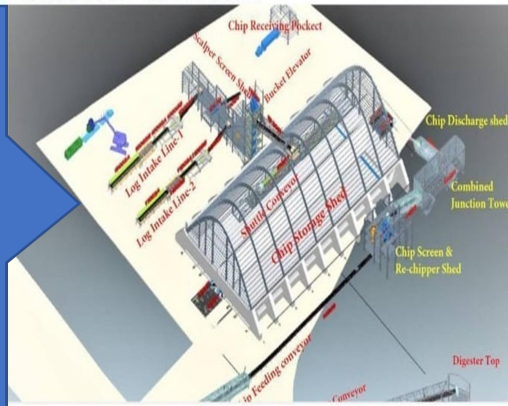
- Our approach to ECI breaks down the walls that traditionally exist between key stakeholders and encourages full communication and transparency between all parties who play a role in the success of the project at all phases of the project lifecycle
- CODEZI ECI facilitates collaboration between key stakeholders to increase ownership and accountability. Continuous updates and knowledge sharing allow each stakeholder to possess a deeper understanding of the critical issues and interdependencies associated with the project.



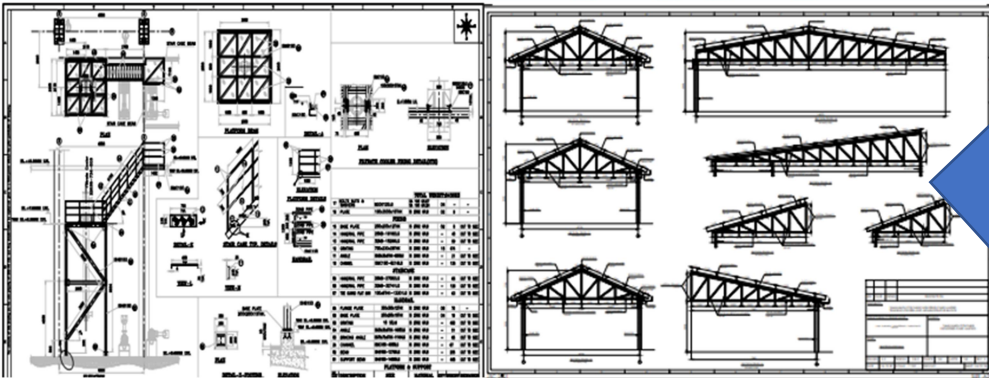
DESIGN & DETAIL ENGINEERING

Whether you need complete plant design solutions or standalone services on your structural requirements, Codezi team can provide comprehensive engineering designs for your structures ensuring functionality, manufacturability and esthetics.

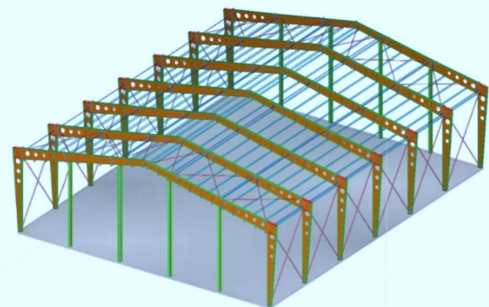
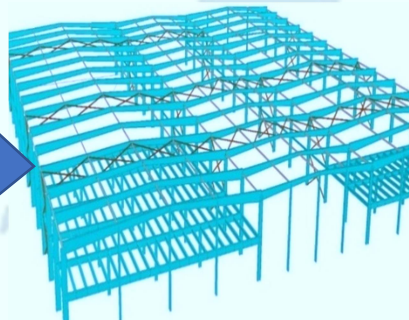
3D Modelling Services



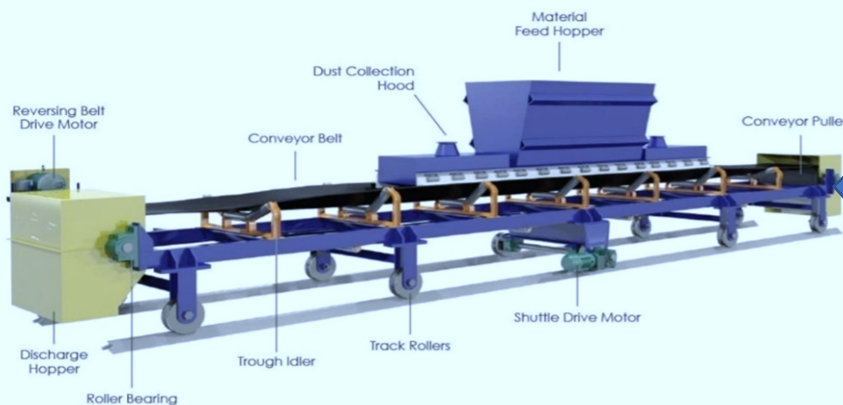
2D Drafting Services



Structural Design & Detailing Services



Design and Detailing Engineering for Material Handling Systems



STEEL STRUCTURAL FABRICATION

Conventional Steel Building Fabrication / PEB - Steel Building Fabrication

We undertake Structural Steel works for all types of Plants / Buildings which includes I - Beam, Angles, Channels, Flat Bars, Squares and Rectangular tubing fabrications.

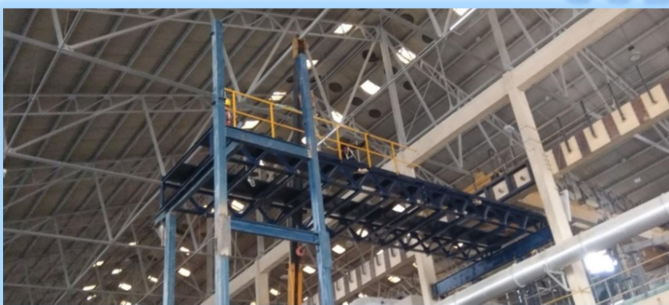
We manufacture Industrial fabrication works such as pipelines, pipe supports, steel pipe racks, platforms, access ladders, etc. both at our factories and on client sites.



Tanks / Hopper / Vessels / Fabrication (MS & SS)



Structural Platform, Handrails & Gantry



MATEIRAL HANDLING EQUIPMENT'S FABRICATION

- Screw feeder, Bowl feeder & Rotary feeder
- Belt Conveyer - Roller Conveyer – Flat Conveyers
- Slide gates & Sector gates
- Bucket Elevator and other equipment's
- Material Handling Equipment Spares & Machining Items



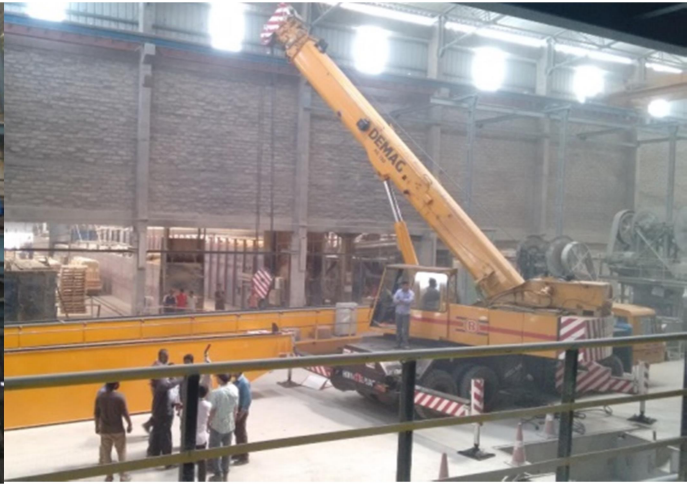
Material Handling Equipment Spare & Machining Items



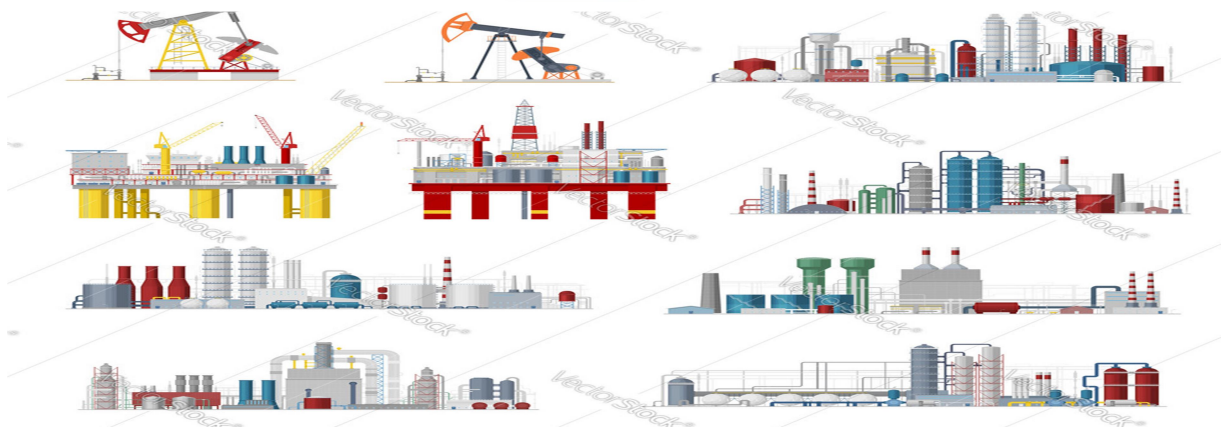
ERECTION / INSTALATION & COMMISIONING WORKS

- Material handling equipment's Erection& Installation
- Tank, Vessels, silo and Column Erection
- Pant Machinery & Heavy Equipment erection
- Heavy Steel Structural with Platform erection





THE INDUSTRIES WE SERVE INCLUDE



- Power Plant & steel plant
- Refinery & Petro chemical plant
- Automobile & Manufacturing
- Sugar & Paper Industries
- Oil & Gas Plant
- Cement & Allied Industries
- Fertilizer & Mining
- Food & Other Processing Plant

OUR ENGINEERING - YOUR SOLUTION

OUR COMPLETED PROJECTS



OUR ENGINEERING - YOUR SOLUTION



OUR ENGINEERING - YOUR SOLUTION

Our company details

CODEZI ENGINEERING SOLUTIONS (P) LTD

No. 29 (G1 – Ground Floor) Pillaiyar Koil 4th Cross Street

Preungudi, Chennai – 600 096

Mobile: +91 99949 86120

Email: info@codeziengg.com, codeziengg@gmail.com

Web: www.codeziengg.com

GSTIN: 33AAJCC4212G1Z4

PAN: AAJCC4212G

TAN: BLRC21424E

Bank: ICICI Bank Ltd

Branch: Perungudi

A/C Holders Name: Codezi Engineering Solutions Private Limited

A/C Number: 322705001204

IFSC CODE: ICIC0003227



**“Codezi combines innovative engineering with unmatched
Commitment to project success”**

OUR ENGINEERING – YOUR SOLUTION